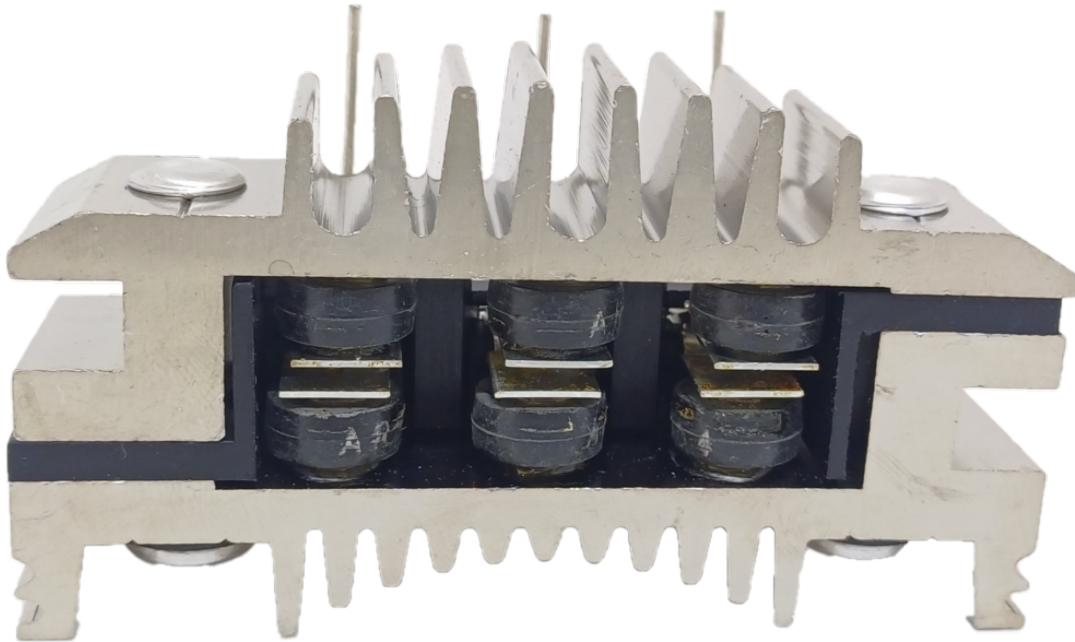




ROTOFRANCE

PUENTES Y PLACAS

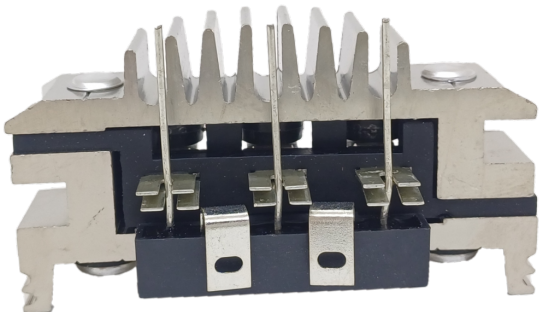
PVALNB928



Puente tipo Valeo: NB928; NB931; Ducelier: 581004; 618487; 691337; M. Marelli: 940038227, PVAL581004;

(6 diodos; con diodos auxiliares)

Aplicaciones: Citroen, Peugeot, Renault



Conexionado: